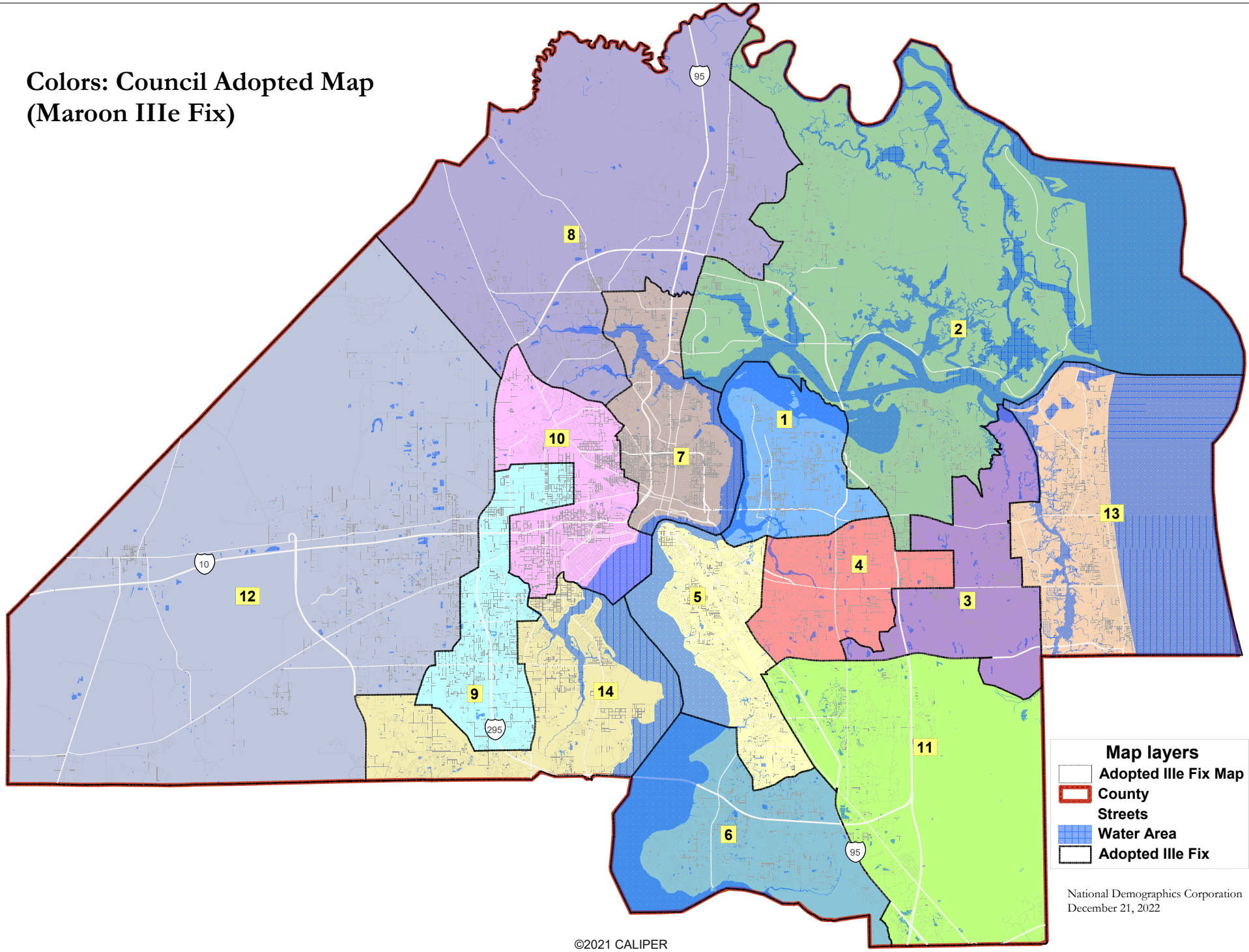


**Colors: Council Adopted Map  
(Maroon IIIe Fix)**

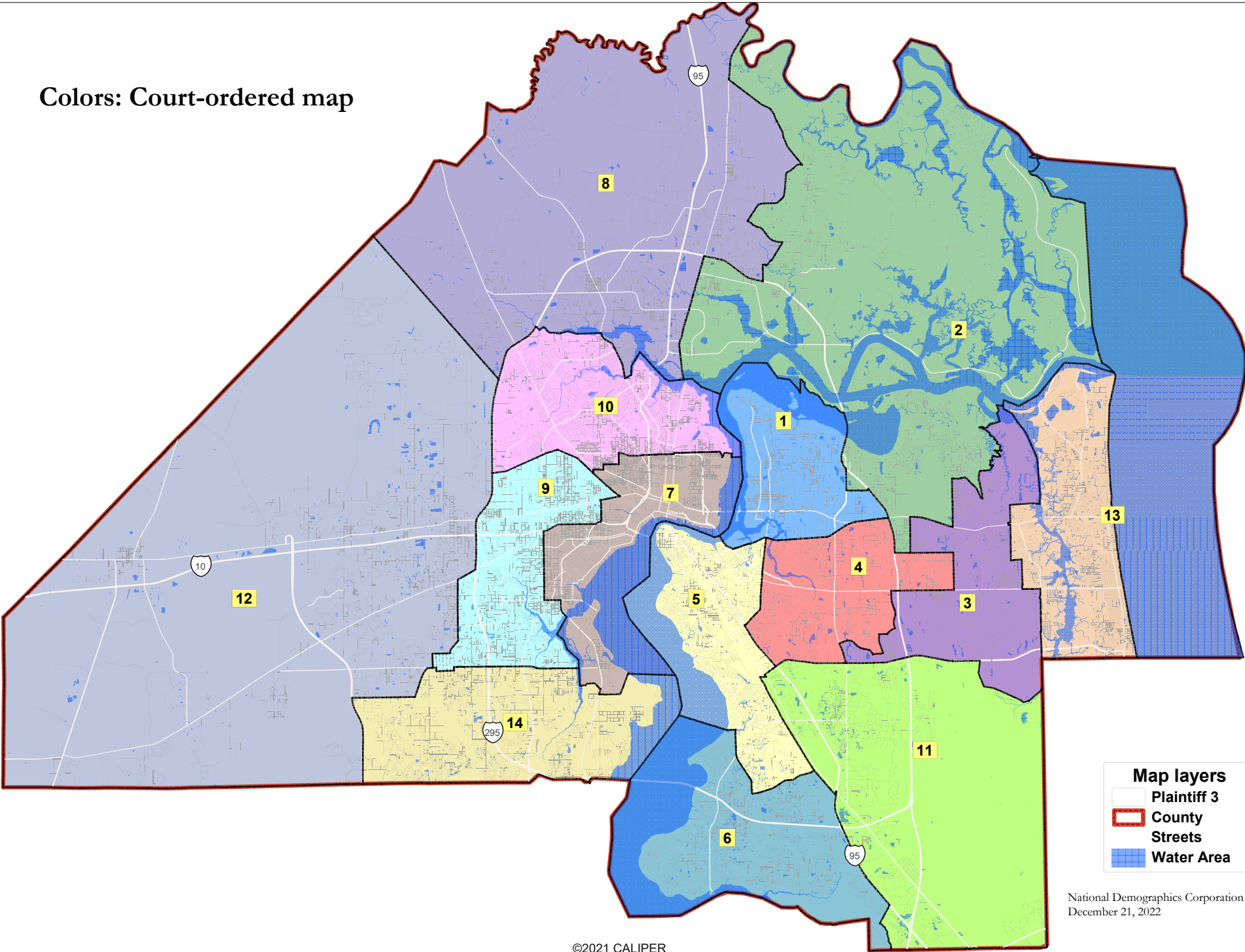


**Map layers**

- Adopted Ille Fix Map
- County
- Streets
- Water Area
- Adopted Ille Fix

National Demographics Corporation  
December 21, 2022

Colors: Court-ordered map



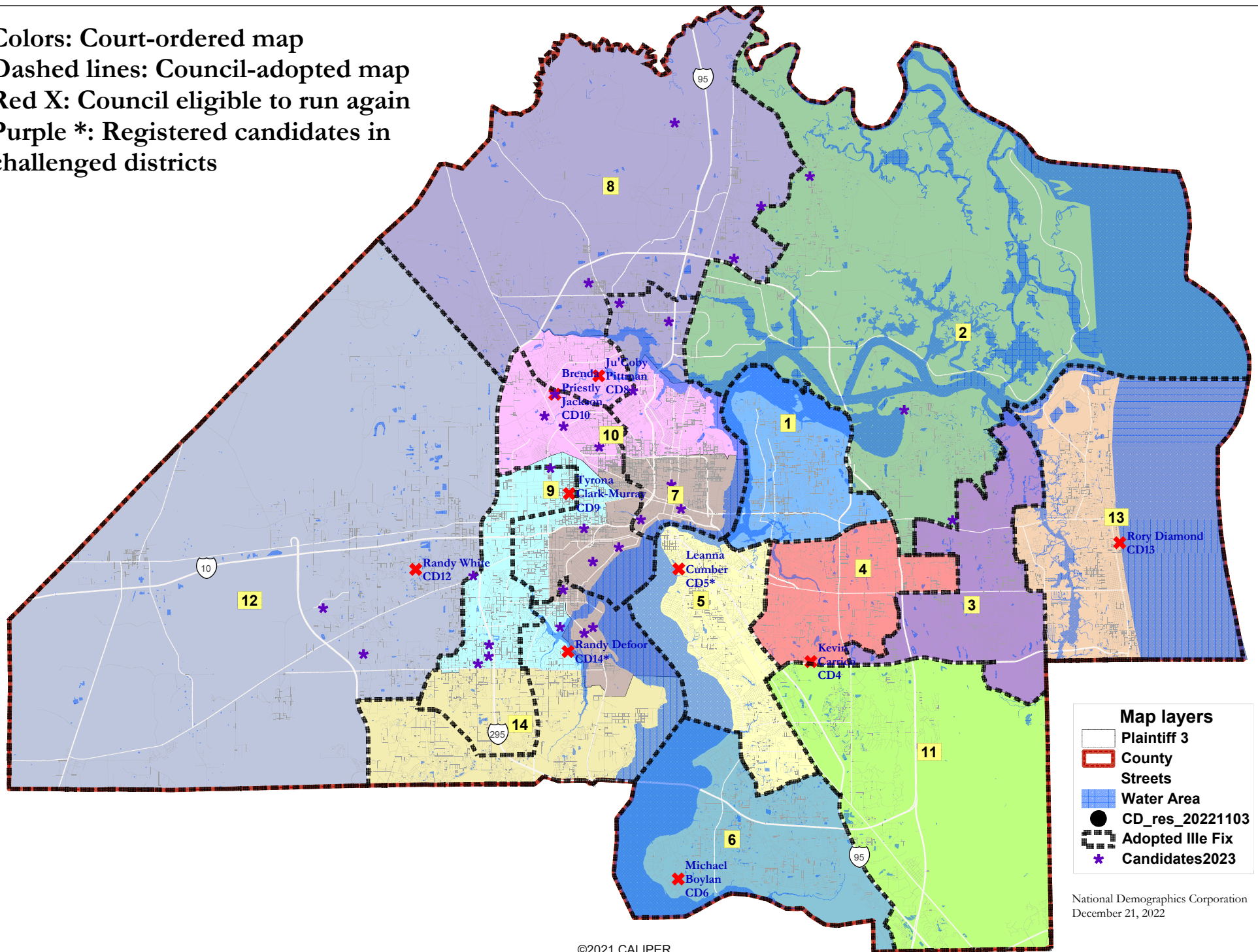
**Map layers**

- Plaintiff 3
- County
- Streets
- Water Area

National Demographics Corporation  
December 21, 2022



**Colors:** Court-ordered map  
**Dashed lines:** Council-adopted map  
**Red X:** Council eligible to run again  
**Purple \*:** Registered candidates in challenged districts



**Map layers**

- Plaintiff 3
- County
- Streets
- Water Area
- CD\_res\_20221103
- Adopted Ille Fix
- \* Candidates2023

National Demographics Corporation  
December 21, 2022



Colors: Court-ordered map  
 Dashed lines: Council-adopted map  
 Red X: Council eligible to run again  
 Purple \*: Registered candidates in challenged districts

**Map layers**

- Plaintiff 3
- County
- Streets
- Railroad
- Water Area
- Council
- Adopted Ille Fix
- Candidates2023

December 21, 2022

